

Juror's Statement

"The art presented in Fiber Hawai'i 2010 offers its viewers' extensive diversity in fiber media. Immerse yourself in examining artists' concerns for our environment in recycled and reused materials, unique fiber forms appropriating ideas from other fine arts, and boundaries being moved to new and exciting places. Conceptual issues with social and cultural content are being developed as well as the traditional craft forms re-examined as contemporary fine craft. Hawai'i craftsmen are honoring their place in locality, culture, and tradition with an open view of the future of fiber arts as it crosses the boundaries with art and life". -**Carole Beadle**

Carole Beadle is a professor in Textile Arts at California College of the Arts. After receiving her BFA and MFA, she continued her studies in Sweden, New York City and in Norway. An award winning internationally known artist in Fiber Sculpture, she has exhibited in major exhibitions around the world and her works have been published in American Craft, Fiber Arts and Surface Design

About Hawai'i Craftsmen

Hawai'i Craftsmen celebrates fine craft as a vital and enriching part of contemporary life and supports the creative growth of its artists.

We achieve our mission through:

- Increasing public awareness and appreciation of fine craft;
- Providing opportunities for continuing education and regular exhibition of member work;
- Sustaining a statewide community of craft artists;
- Promoting the organization and members locally and nationally.

Hawai'i Craftsmen, founded in 1966, is a statewide nonprofit membership organization. We educate the public, increasing its awareness of fine crafts, by publicizing fine crafts as a viable and enriching part of contemporary life; we support high standards of quality among member craftsmen by offering workshops and juried exhibitions; we gain recognition for craftsmen in Hawai'i; and increase connections of craft artists in Hawai'i to each other and the national craft world.

Hawai'i Craftsmen serves the entire state, reflecting their members' diversity of disciplines and ethnicities. There are a variety of opportunities for members to get involved: the `Aha Hana Lima annual workshops, Raku Ho'olaule'a (camp out and ceramic firing), Hawai'i Craftsmen Annual Statewide Juried Exhibition, Fiber Hawai'i, a biennial Fiber exhibition, guest slide lectures and demonstrations, and The Window showcase at The ARTS at Marks Garage. Our website features our organization, programs and member artists.

About Fiber Hawai'i

Hawai'i Craftsmen started Fiber Hawaii in 1982 as fiber artists were pushing the boundaries beyond traditional and functional. Fiber arts was becoming visible in the world of contemporary fine art. It was an exciting time for fiber as an art form and the right time for Hawai'i Craftsmen to sponsor a juried fiber exhibit. Letters were sent to encourage print-makers, painters, ceramists and sculptors to enter.

Fiber Hawai'i, a biennial showcase of contemporary art and craft based on fiber traditions, uniquely encourages creative interpretation of fiber as media as well as idea, offering artists an opportunity to explore their work within the context of contemporary fiber art. Entries range from ceramic or metal work involving fiber techniques to traditional Hawaiian Kapa.

Arturo Alonzo Sandoval was the first juror and he served as juror again for our "10th Anniversary" in 1992. Many other nationally known fiber artists have served as jurors over the years: James Bassler, Nance O'Banion, Lillian Elliott, Cynthia Schirra, Susan Sternleib, Donald Rubinstein, Junco Sato Pollack, Rhonda Brown and Tom Grotta of browngrotta arts, and now Carole Beadle.

Hawai'i Craftsmen welcomes new members. For more information call 808-521-3282 or visit our website:

www.hawaiicraftsmen.org

2010 Board of Directors

Officers

Jackie Mild-Lau, **President**
Tiffany DeEte Shafto, **Vice President**
Maya Portner, **Secretary**

Peter Bihari

Diane Chen Koch-Weser

Margo Kessler Cook

Claudia Coonen

Richard Duggan

Daven Hee

Susan Horowitz

Jay Jensen

Janice Kim

Theresa Papanikolas

Esther Shimazu

Honorary Director

Liz Train

Executive Director

Rose Anne Jones

Program Manager

Verena Snively

Lifetime Members

Ruthadell Anderson

Henry Clark, Jr.

Lucille Cooper

Kim Coffee-Isaak

Peter Drewliner

Ed Higa

Claude Horan

Kenneth Kang

Erica Karawina

Harue McVay

Yukio Ozaki

Frances Pickens

Toshiko Takaazu

Elizabeth Train

Indru Watumull

Founded in 1966, Hawai'i Craftsmen is a non-profit organization.

**Support the Arts
in Hawai'i**

**Support
Hawai'i Craftsmen**

Fiber Hawai'i 2010

Crossing Boundaries

January 19-February 27

The ARTS at Marks Garage, 1159 Nu'uanu Avenue, Honolulu

Tuesday-Saturday 11 am to 6 pm- Closed Sunday and Monday

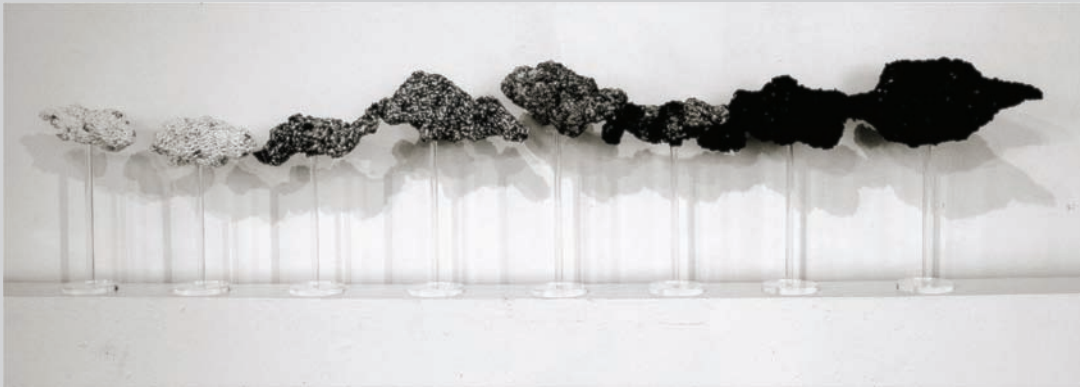


Boris Huang

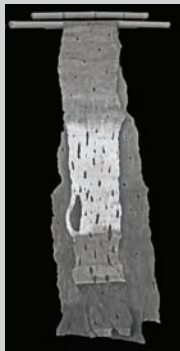
Fierce

Indru & Gulab Watumull Award of Excellence (Total Body of Work)

Awards of Excellence Selected by Juror Carole Beadle



Maika'i Tubbs *Memorings*
Award of Excellence in Memory of Shore Hodge Lipsher
Sponsored by Reiko Brandon and Elizabeth Train



Georgia Sartoris
Autthaya Honorable Mention



Aaron Padilla *Herring*
Crossing Boundaries Award



Billie Farrell
Kings Wore Capes
Honorable Mention



Mahalo to our Fiber Hawai'i Program & Award Sponsors:

Award Sponsors

Reiko Brandon
Hawai'i Handweaver's Hui
Charles E. Higa and
Peter G. Drowliner
Temari Center for Asian
& Pacific Arts
The Fine Art Associates, Inc
Liz Train
Indru and Gulab Watumull

Fiber Hawai'i 2010 Support

Reiko Brandon
Ellen Crocker
Hawai'i Handweaver's Hui
Elizabeth Kent
Janice Marsters
Jackie Mild-Lau
Lynda Sakraida
Georgia Sartoris
Liz Train
Dee Van Dyke

Ghislaine Chock *Let the Light In*
Hawai'i Handweaver's Hui
Award for Weaving

Fiber Hawai'i 2010 Juried Entries

Kathleen Abood
Lucid Dreaming:
Fish Vortex \$2,000
Monotype on Fiber

Lisa Louise Adams
Saint Damien \$920
Quilt

A. Kimberlin Blackburn
*Aoli & Evangeline Whyte-
Chan Lassie (Pair)* \$1,100
Fabric, Thread, Wire, 97%
post consumer materials

Chris Campbell
Island Days \$500
Mixed

Kahi Ching
Aqua Fiber Cultivar \$4,800
Paper Mache & Acrylic

Ghislaine Chock
Let the Light In NFS
**Hawai'i Handweaver's
Hui Award for Weaving**
Linen Cloque
Light as a Feather NFS
Fiddlehead Fern Silk

Claudia Coonen
Guava Patch \$850
Pieced Quilted Paper

Sierra Dew
Factory Girl \$300
Fabric, Acrylic Stencil

Billie Farrell
14 Courses (42 Credits) \$80
Paper, Glue, Masking tape
Kings Wore Capes \$300
Honorable Mention
Plastic Shopping Bags

Patricia Greene
Dragon Flight \$600
Embroidery, Paint

Borris Huang
Fierce \$1,350
Feather Lei
Peppermint \$650
Feather Lei
Silent Power NFS
Feather Cape
Simply Gray \$650
Feather Lei
Indru & Gulab Watumull
Award of Excellence

Charlene Hughes
Caffeinated \$700
Knitted quilt, yarn
Mood Swings \$550
Fabric, Some Hand Dyed

Benita Hunt
Absorbed \$400
Eradicate \$400
Hand Made Paper,
Monoprint

Elizabeth Kent
Shades of Nahenahe \$1,000
Wakarimasen \$750
Quilts

Sidney Lynch
Ascending NFS
Ikat, Plain Weave
Hungz Dz NFS
Devore & Dye
Reborn NFS
Hand Painted Warp,
Plain Weave

Janice Marsters
Kapa Series No. 2 \$150
Hand Felted
Merino Wool
Whorl \$100
Silk & Wool Hand
Felted on Silk

Jackie Mild Lau
David & Webb's
Heavenly Ladder \$720
Tangerine Wood, Ti
Leaves, Cotton String

Juli Morsella
Big Mouth \$220
Dry Felted Wool
Low Tide II \$220
Dry Felted Wool

Jane Noe
Untitled \$150
Pig Gut

Esther Nowell
Chrysalis \$200
Fiber-Clay

Aaron Padilla
Herring \$2,500
Poplar Wood
**Crossing Boundaries
Award**

Gail Pike Hercher
Moon \$175
Beads & Wire

Maya Lea Portner
Studies of Wire
*Connections and the
spaces between* \$400
Graphite on Cotton Paper
*Wire Structure--
Head piece* \$900
Galvanized Steel Wire

Marci Prins
Woven Clay I NFS
Woven Clay II \$80
Paper Clay

Jacqueline Rush Lee
Flora: Summer Reading
Series 2009 \$5,500
Manipulated, Hand-
Stitched Books & Ink

Georgia Sartoris
Autthaya \$1,800
Honorable Mention
Kapa, Gouache, Bamboo
Kaho'olawe \$550
Kapa, Gouache
Palm Fan \$300
Coconut Fiber, Paint

Patricia Steinhoff
Sunset Mobius Shawl \$175
Fiber, Handwoven

Tanyah Tavorn
Low Carb High Fiber Value Meal
Yarn \$95

Margaret Teruya
Gold Pineapple NFS
*Newspaper Column-
Black and White*
and Read All Over \$125
Fabric

Gail M. Toma
*Black & White-
White & Black* \$250
Semi Random \$550
Basketry

Liz Train
Sunset Basket \$200
Fused Glass
Timeless Tide \$850
Painting, Stitching
Waterfalls of Libo \$900
Silk, Wool, Felting

Maika'i Tubbs
Memorings \$2,400
Shopping Bags, Plexiglass
Shore Hodge Lipsher
Award of Excellence

Lory Y. Uyehara
Aqua Flora \$300
Mixed Media Fiber

Dee Van Dyke
A Bunch of Books/
What Knot Series \$250
A Pair of Woven Words \$250
Walter & Ethel \$450
Mixed Media

Victoria Gail White
Earth Wave \$275
Marbled Paper

Carol Kouchi Yotsuda
Dreams Keep Me in
Stitches I & II NFS
Machine Stitched