

Hawai'i Craftsmen

Volume No. 9, Issue No. 2
May 2004

Increasing Awareness of Fine Crafts since 1966

OFFICERS

President

Kenn Sprague
spraguek001@hawaii.rr.com

Secretary

Gail Hazlehurst
gailhazlehurst@hawaii.rr.com

Treasurer

Kim Coffee-Isaak
kim@artsatmarks.com

DIRECTORS

Barbara Bohnett
barbarab@hawaiicraftsmen.org

Tiare Dutcher
joyisimportant@hotmail.com

Marsha Eaton
marsha@hawaii.rr.com

Kip Howe
howehi2@hotmail.com

May Izumi
mizumi@soest.hawaii.edu

Ron Kent
ron@ronkent.com

Dave Merkel
merkel@hawaii.edu

Maren Mosler
mosier@hawaii.edu

Elizabeth Train
lizabethtrain@hotmail.com

Diana Tusher
tusher@att.net

Linda von Geldern
ohia@lava.net

Program Director

Jo Rowley
jo@hawaiicraftsmen.org



Hawai'i Craftsmen Annual Meeting is a Huge Success!

130 people attended the annual meeting at The ARTS at Marks Garage in March.

The Aha Hana Lima guest artists were also present to show slides of their works prior to the Aha Hana Lima Workshops.



FIRST TUESDAYS - NEW @ MARKS Starting MAY 4th!!

Hawaii Craftsmen is developing a new program of educational sessions the first Tuesday of every month as another benefit of membership in the organization. The first session is titled "Practical Finances for Impractical People" given by Ron Kent.

The sessions will start promptly at 6 p.m. at The ARTS at Marks Garage, 1159 Nuuanu Ave. and will last about an hour and a half with time for a question/answer session at the end. Bring a brown bag snack or dinner and we'll provide the coffee in a comfortable venue.

Ron Kent is a full-time woodturner and multi-media artist. Three-times past-president of Association of Honolulu Artists, he has been active in juried exhibitions since 1967.

In his "other life" Ron was a stockbroker, vice-president at Prudential Bache, financial consultant, and founder/president of Leahi Tax-Free Income Trust mutual fund.

This first program ---- **Practical Finances for Impractical People** ---- summarizes two-day seminars he has presented to Art groups here and on the Mainland. It covers many aspects of our lives as artists, craftspeople, and everyday citizens.

Topics will include:

Pricing your work
Dealing with galleries
Craft fairs and direct sales
Exposure, marketing, public relations
Advertising
Donations
Rip-offs
IRA and 401-K

Plus straight-talk answers to questions you may ask. The program will start and end promptly in courtesy and respect to the importance of your time.

IN THIS ISSUE:

Aha Hana Lima Recap .. Pg 2

Fiber Hawaii 2005 Pg 3

First Tuesdays - NEW! .. Pg. 1

Raku Planning Pg 3

Shows @ Marks Pg 4

Volunteer Opportunities Pg 2

ZÜGS is coming! ... Pg 3



'AHA HANA LIMA 2004 RECAP

Hawai'i Craftsmen's spring workshop series was held March 18 through March 22, 2004. This intensive professional-level workshop series is accessible and affordable to Hawai'i's craft artists. Scholarships helped to defray the expenses of neighbor island participants or to allow students and studio artists who might not be able to afford the full registration fee to participate.

The four visiting craft artists taught students their techniques and shared their philosophy and knowledge. The workshop format featured demonstrations, lectures, discussion, slides and hands on activities. Registrants participated to the degree that they felt comfortable or qualified. The invited artists for this year's workshops were Sergei Isupov-clay, Benjamin Moore-glass, Tom Muir-metal and Jacques Vesery-wood.

These artists were selected because of their success and high standing in the international fine crafts community, and a registrant would benefit and enjoy the experience even if the only thing they did was observe for three days Bringing craft artists to Hawai'i helps to keep our state in the mainstream of the U.S. craft world, keeping us abreast of current trends.

A free slide lecture was held on Thursday, March 18, 2004 at 6:30 pm at The ARTS at Marks Garage. (130 attended) The workshops were March 20-22, 2004 and were held at the University of Hawai'i Manoa. (73 participants registered including 4 full scholarships).

We signed up 12 new members and 30 members renewed their membership dues. Support for this event was provided by The University of Hawai'i, the State Foundation on Culture and the Arts, Ceramics Hawai'i SNAG and The ARTS at Marks Garage.

Participants reported that the workshops this year were excellent. The caliber of the guest artists and the chance to spend time with them was an unforgettable experience.



Artists: from top to bottom: Tom Muir-metal , Benjamin Moore-glass, Jacques Vesery-wood and Sergei Isupov-clay.



VOLUNTEER OPPORTUNITIES



We welcome volunteer assistance at our events and in our office to prepare for events. Check our calendar on our website: www.hawaiicraftsmen.org, and call the Hawai'i Craftsmen office at 596-8128 to find out specific requirements for volunteer opportunities.



FIBER HAWAI'I 2005

Fiber Hawaii 2005 is coming in January 2005 at Linekona. Liz Train is looking for committee members to help organize the show. If you'd like to help with the preparation, call Liz at 737-4631 or email her at lizbethtrain@hotmail.com.

ZÜGS is coming!

Once a year Hawai'i Craftsmen has a major fundraising event. We need your help to make it successful. We need donations and we need volunteers. Please look through your home (and your friends and families homes) for items that are ready to be recycled into cash for Hawai'i Craftsmen programs. We are looking for fine art, contemporary and traditional crafts (seconds are great!), jewelry, antiques, furniture and collectibles. Also art books, special handmade / dyed / vintage fabrics, and art supplies and equipment.

Many re-donate items they bought at a previous ZÜGS to make room for new items purchased this year! We will not be accepting household goods, clothing, toys, or office supplies unless they are distinctive in their design or desirability. (ie. vintage or ethnic clothing, antique collectible home accessories or toys, working up to date computer equipment, well designed usable lamps or furniture).

We have scheduled many convenient drop-off times that will be staffed by volunteers (daytimes, evenings and weekends). If these times do not work for your schedule call the HC office and make arrangements to drop them off there. If your items are especially large or bulky we may be able to send someone to pick them up, call to see if this is possible. Please sign up for one or more volunteer shifts. It's great fun to work with your fellow artists and friends. More details about donations, drop-off times and volunteer shifts are enclosed in this newsletter. Please participate. This is a worthy project and will be successful with full participation of our membership.

The event details:

What:	ZÜGS Z Ultimate Garage Sale
When:	Saturday June 5 , 9 am - 4 pm & Sunday June 6 , 9am - 11 am
Where:	The Austin Building, 1139 Nuuanu Ave. (old Havana Cabana space)
Cost:	Free Admission

AND

What:	Join us for the Opening Night : Pupu, Wine, and a first chance to see and purchase items.
When:	Friday June 4 , 5 - 10 pm, event is part of the First Friday Art Walk
Where:	The Austin Building, 1139 Nuuanu Ave. (old Havana Cabana space)
Donation:	\$5

Call (808) 596-8128 for more information about this event or Hawai'i Craftsmen.

RAKU DATES: AUGUST 5-9

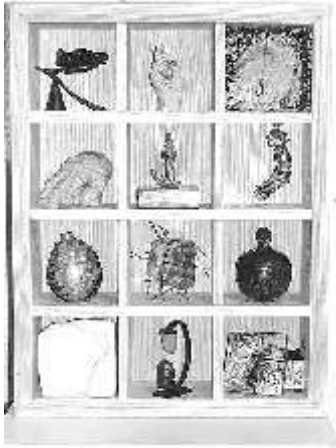
As we reported in the last newsletter, the Raku dates had to be changed due to a conflict at Kualoa Beach Park. Mark your calendar for this later event, bring your creativity and have a ball. This is always well attended and results in some fine work by our members.

Contact Kip Howe for more details at 256-3420 and check the website for the RAKU registration form: www.hawaiicraftsmen.org/programs_raku.htm, or pick one up at The ARTS at Marks Garage. The last day to register is **JULY 19th**.

RAKU GUEST ARTISTS:

Dave and Boni Deal

www.yellowleaf.org/raku/main.htm



SHADOW BOX FUNDRAISER

The Shadow Box Fundraiser was a huge success. We raised more than double our goal, selling more tickets than anticipated. Cindy Chapanot was the lucky winner of the drawing. CONGRATULATIONS!

SHOWS @ MARKS GARAGE

Our current project is a Display Cabinet for members to display works at The ARTS at Marks Garage. We would like to give it a proper name. If you have any ideas, please send them to Tiare Dutcher. The board will choose a name from those that come in.

The Display Cabinet is soliciting members for a small recent work. If you have something you'd like to display during the months of July and August, please call Tiare at 737-8127 to reserve a space in the Cabinet, or email her at joyisimportant@hotmail.com. The works need to be brought into Arts at Marks Garage ON June 29, between 10 AM to noon. Call Tiare before June 29 if you can't make this time.

Tiare would also like to hear from Members who would like their own member page on our website.

SAVE THESE DATES

- May 4 First Tuesday - "Practical Finances for Impractical People"
- May 15 Raku Tea Ceremony lecture & demonstration
- June 4 **ZUGS Z Ultimate Garage Sale**
- July 19 Raku Registration Deadline
- August 2 Raku Ho'olaule'a Slide Lecture
- August 3 Raku Wet clay demo
- August 5-9 Raku Ho'olaule'a
- Aug.17-Sep 11 Raku Ho'olaule'a Exhibition
- October 4 Annual Exhibit Juror Slide Lecture
- October 8-31 Annual Statewide Juried Exhibition

Look for details at: www.hawaiicraftsmen.org calendar

Hawai'i Craftsmen
P.O. Box 22145
Honolulu, Hawai'i 96823- 2145

Non-profit
Organization
U.S. POSTAGE
PAID
Permit No. 1443
Honolulu, Hawai'i